

Boundary

/ˈbʌʊnd(ə)ri/

noun

We do not understand what that means.



The background of the page is a vertical aerial photograph. The left half shows a lush green forest with a winding asphalt road that curves through the trees. The right half shows a snowy mountain landscape with a similar winding road. The transition between the two scenes is vertical, occurring behind the text area.

Making **Accessibility** a **Possibility**

Sapcon Steels, a brainchild of Aggarwal Group was formed with an ambition of bringing a transformation in 4 major sectors of their operations: Steel & Construction Materials Supply & Management along with other group entities that deal with Steel Manufacturing, Automobile dealerships and Real Estate.

Established in 1992 and headquartered in J&K, Sapcon had a clear foundational motive, reliable and predictable supply of high-quality steel across the Globe. Right people, reliable quality, strong vendor relations, impactful systems, efficient capabilities and accessible locations have enabled us to reach even the remotest of areas.





The background of the entire page is a photograph of a long, multi-span bridge stretching across a calm body of water. The bridge's reflection is clearly visible in the still water. The sky above is filled with soft, white clouds, and the overall color palette is dominated by blues and greys, with a touch of orange from the text.

Understanding precise **Market needs**

Efficiency, client fulfilment, sustainable growth and mindful synergies are the fuels that drive us. Sapcon Steels Private Limited is not only India's largest but also the most diversified and accessible steel supplier.

Sapcon is one of the most geographically diversified steel suppliers in India with loading hubs spread across the country. With an unparalleled inventory and uninterrupted supply, Sapcon maintains cost-effectiveness and efficiency.

Shaped by
Endeavours
& **Ambitions**

Trading Division

- Sapcon Steels (P) Ltd.
- Aggarwal Traders



Automobile Division

- Jammu Motors Pvt. Ltd.
(Dealership of Maruti Suzuki (I) Ltd.)

- Jammu Bajaj Pvt. Ltd.
(Dealership of Bajaj Auto Ltd.)

Steel Manufacturing Division

- Vijay Steel Industries
(Manufacturers of Kamdhenu
TMT Bars & other Steel Products)

Real Estate Division

- Skyline Infrastructure (P) Ltd.
(Real Estate Developers)

Playing an **Integral** role
in **Turnkey** projects





Making
it happen, **Always!**



5 States



7 Corporate Offices



100+ Strong Team



1000+ Clients



Driven by **Consistency** & **Efficiency**



Sapcon Project Handling

- Over 2 decades of expertise
- On time delivery
- Efficient communication of project status at each step, from PO to delivery



Sapcon Managed Loading Hubs

- 35+ loading hubs and stockyards across the country
- Adequate stocking of each SKU at nearest possible location to ensure quick delivery
- Ready stock of Special Grade Steels to meet specialised needs



ERP Run Business



27 States Supplied



15+ Strategic Partnerships



4 Union Territories Supplied



35+ Loading Hubs
PAN India



750+ Project Demands Met



1000+ Cr Turnover



20+ Primary & Secondary
Brands Available

Committed to providing world class Services



Sapcon Quality Certified

- Strict procurement from the top mills of India
- Thorough inspection where quality of the material is checked with proper issuance of the relevant IS Codes
- ISO 9001:2015, ISO 14001:2015 & OHSAS 180001 Certified Processes



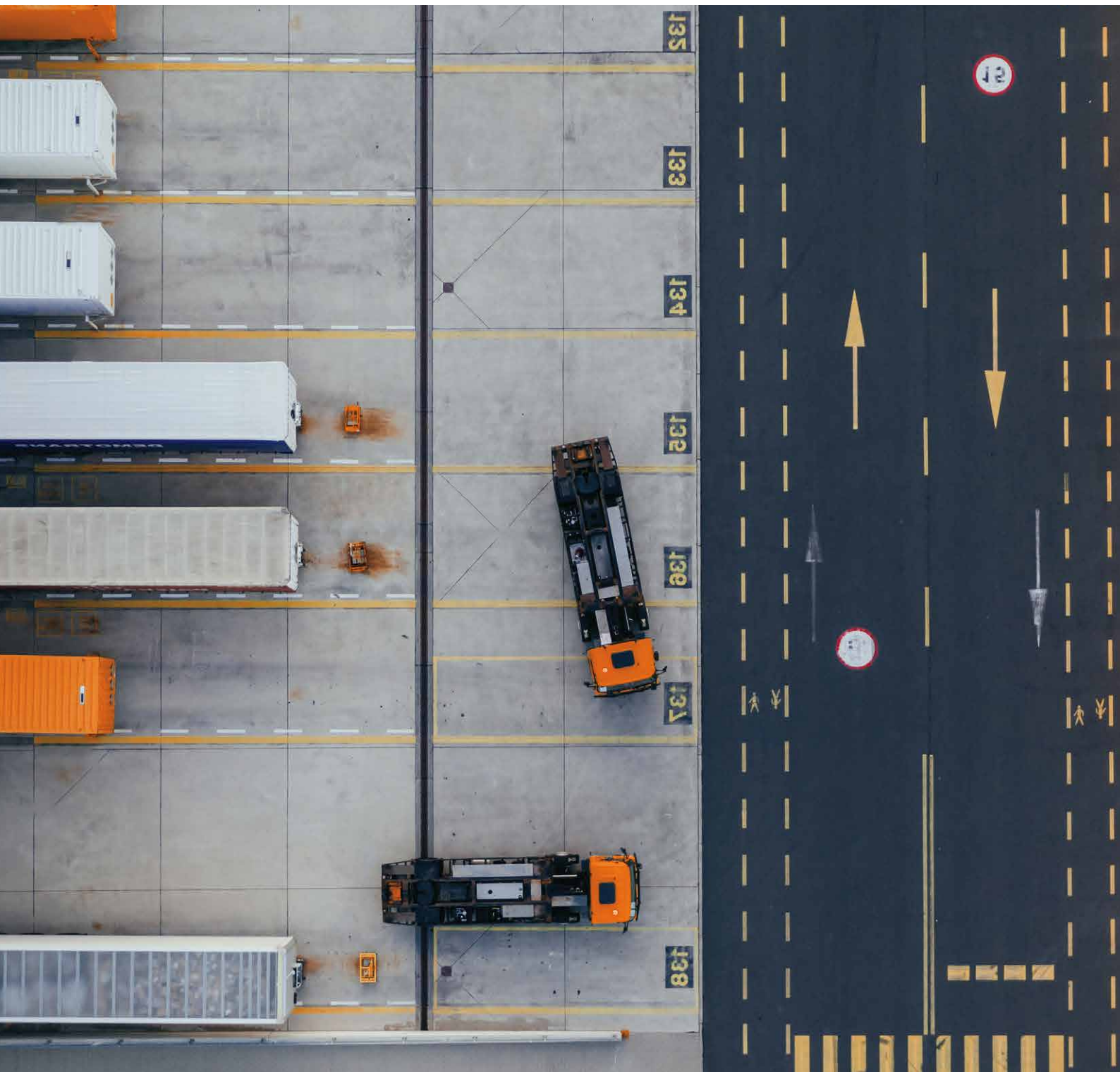
Sapcon Empowered Logistics

- Sapcon's certified professionals can arrange delivery to your specified location or to the port nearest to you
- Delivery by Road, Rail, Sea
- Real-time information on dispatch, locations, key contacts and other useful information to keep you updated at every moment





- Test Certificates of all products provided
- Only IS-Grade Standard Material supplied
- Instant Resolution of any quality complaint



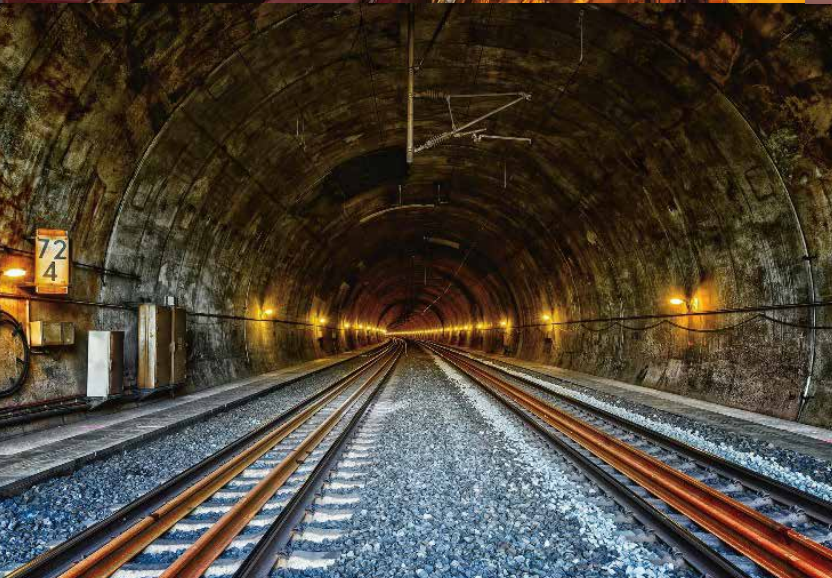
Fulfilling Steel Supply for Turnkey Projects

Sapcon has successfully played integral roles in project accomplishments, both for the private and public sectors. Some of India's biggest undertakings have chosen Sapcon when it comes to accomplishing turnkey projects that become important landmarks.

- **Mumbai Metro (Maharashtra)**
Metro Systems
- **Ultra Super Critical Power Plant, Godda (Jharkhand)**
Thermal Power Plants
- **LNJP Hospital (Delhi)**
Hospitals
- **Delhi Mumbai Expressway (Multistate)**
Expressways & Highways
- **Zuari Cable-Stayed Bridge (Goa)**
Road Bridges
- **Numaligarh Refinery (Assam)**
Petrochemicals & Refineries
- **Zojila Tunnel (J&K)**
Road Tunnel Systems
- **Patna Airport (Bihar)**
Airports & Terminals
- **IIT Kanpur (Uttar Pradesh)**
Educational Institutions







Meeting projects needs across the **Nation**

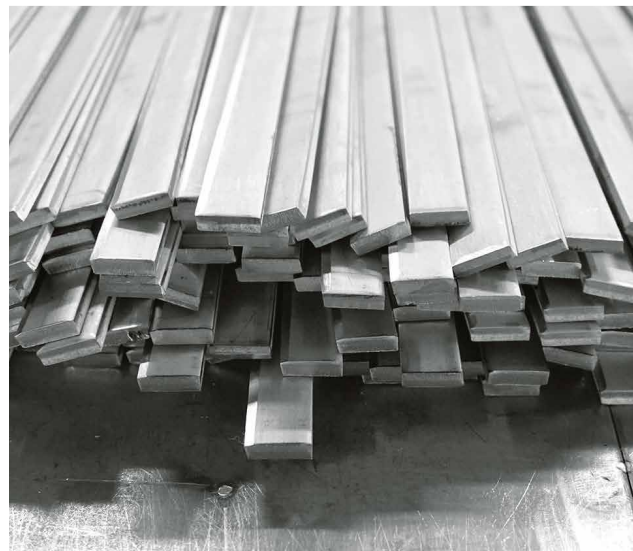


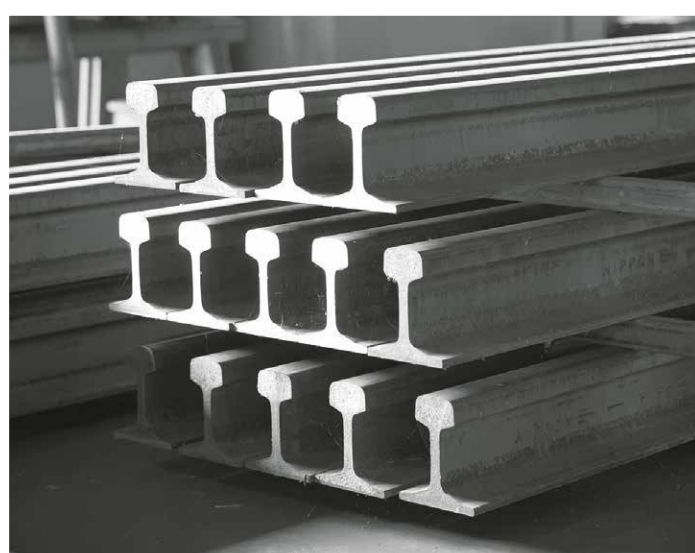
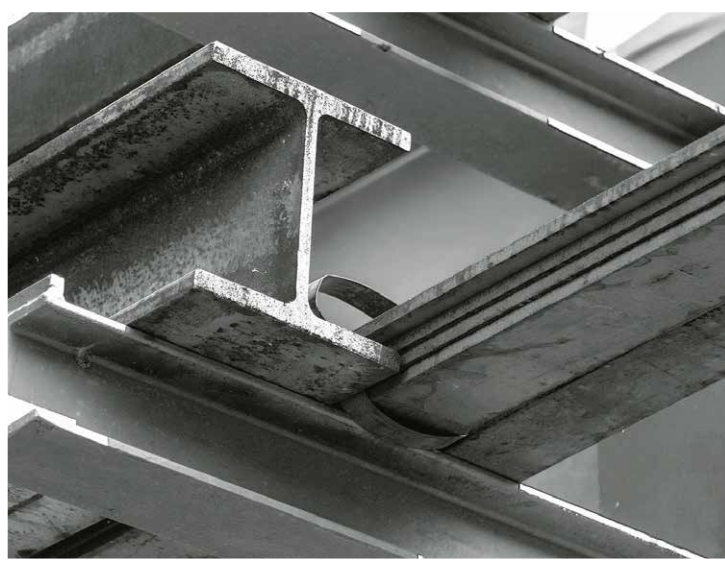
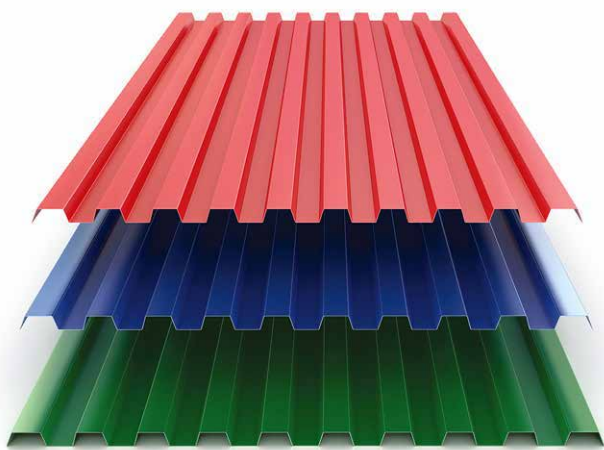
- **High Court Complex (Mizoram)**
Government Buildings
- **Hero MotoCorp Unit (Gujarat)**
Industrial Plants
- **Tidong Hydropower Project (Himachal Pradesh)**
Hydro Power Plants
- **Dhamra Port (Odisha)**
Ports & Shipyards
- **Southern Power Grid Project (Tamil Nadu)**
Powergrid & Transmissions
- **DRDO Unit (Telangana)**
Defence
- **Rishikesh - Karanprayag Rail Line (Uttarakhand)**
Railway Tunnel Systems
- **Chenab River Bridge (J&K)**
Railway Bridges

Delivering
What you need,
When you need and
Where you need it!

Our product range ensures solutions that can meet every need and sustain the biggest of projects.

- TMT & Rebars
- Sheets & Plates
- Channels
- Angles
- Beams
- Flat Bars
- Round Bars
- MS & GI Pipelines
- GP & GC Sheets
- Colour Coated Sheets
- Binding Wire & Wire Rods
- Rails





Meeting **Diverse Needs** by **Being Diverse**

Sapcon believes in being efficient enough to make optimum steel available to various sectors in accordance with their specific needs. Sapcon has become the leading supplier of steel across major industries including but not limited to construction, thermal power, government defence projects, hospitality and more.



Highways & Expressways



Malls, Retails & Parking



Railways Bridges & Tunnels



Warehouse & Distribution Center



Airports



Commercial Offices



Power Grids & Transmission



Defence Projects



Hydro Power Plants



Stadium & Leisure



Thermal Power Plants



Metro Systems



Bridges



Hospitals



Industrial & Processing Plants



Education

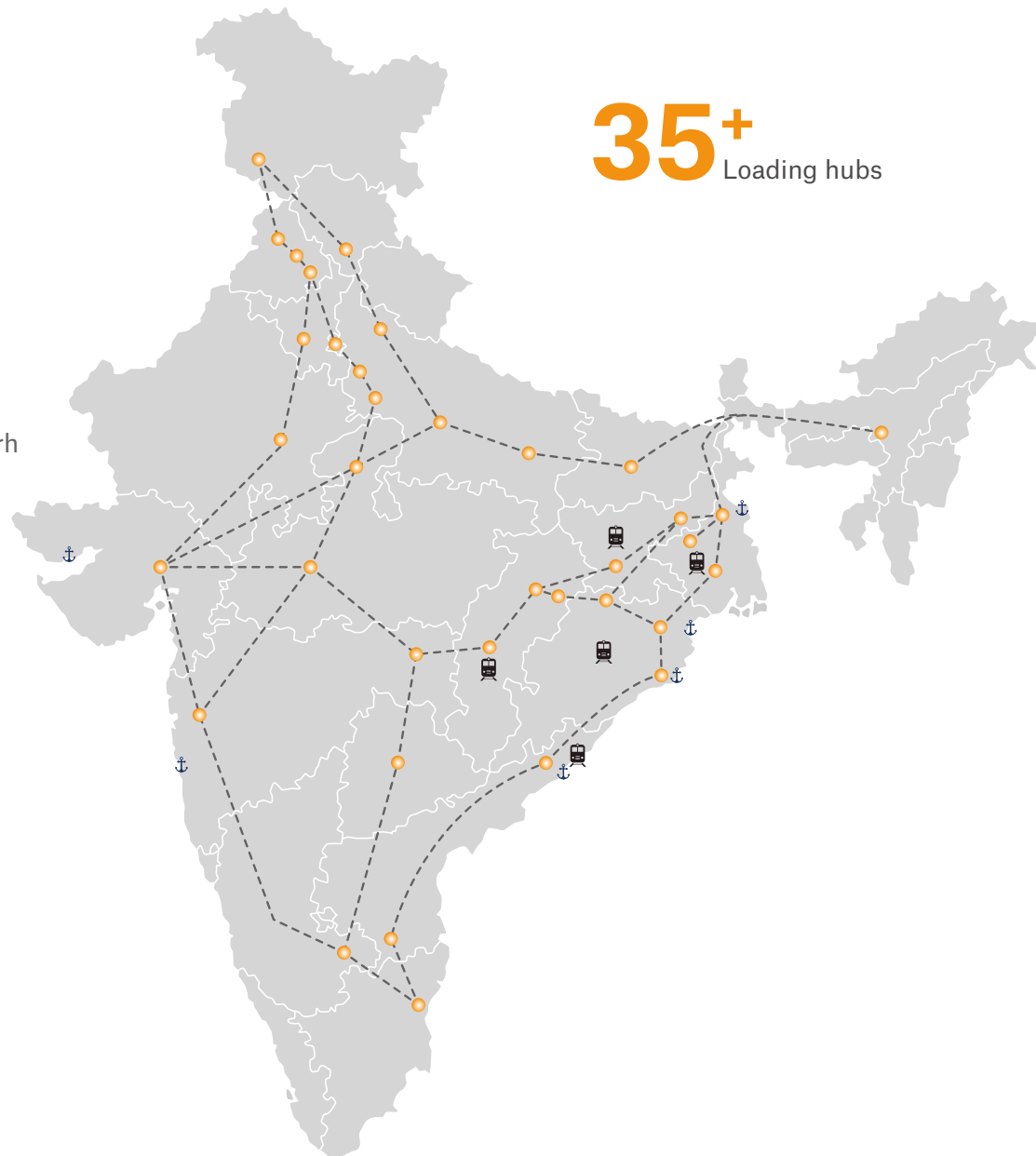
Boundaries are a Myth

Our PAN India presence enables us to meet mission-critical projects and upscale the operational efficiency of our clients.

- Raigarh
- Bhilai
- Raipur
- Delhi
- Faridabad
- Ghaziabad
- Nagpur
- Mumbai
- Hindupur
- Vishakhapatnam
- Jammu
- Hissar
- Varanasi
- Kanpur
- Agra
- Dehradun
- Guwahati
- Ludhiana
- Jalandhar
- Mandi Gobindgarh
- Jaipur
- Kolkata
- Durgapur
- Burnpur
- Gwalior
- Indore
- Chennai
- Bengaluru
- Hyderabad
- Patna
- Ahmedabad
- Angul
- Bhubneshwar
- Rourkela
- Bokaro
- Patratu
- Solan

- ⚓ Mundra Port
- ⚓ JNPT
- ⚓ VIZAG Port
- ⚓ Paradip Port
- ⚓ Dhamra Port
- ⚓ Benapole Port

- 🚂 Angul
- 🚂 Patratu
- 🚂 Durgapur
- 🚂 Bhilai
- 🚂 Vizag

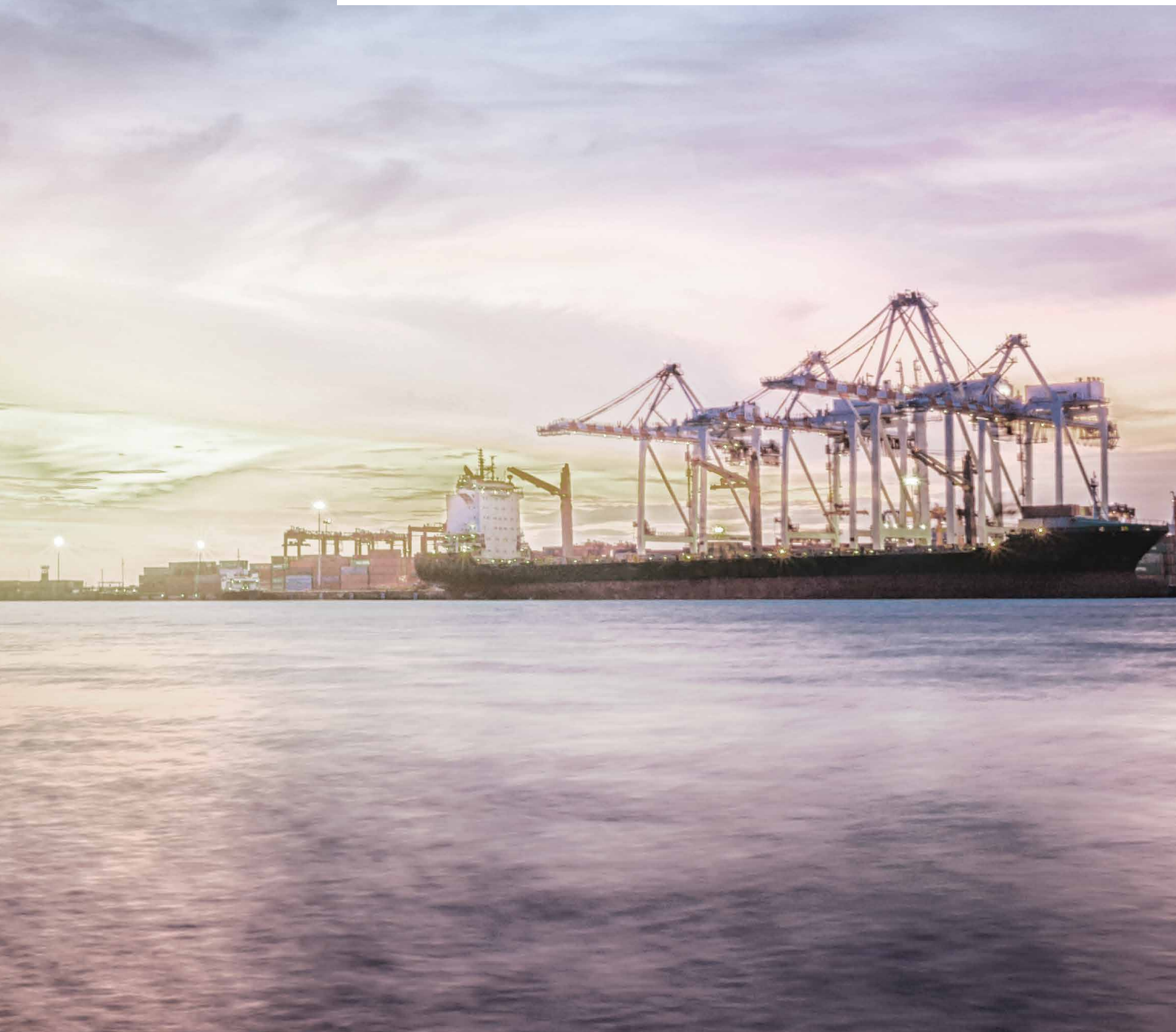




Conquering Global boundaries with **Easy Accessibility**

Our strategically situated loading hubs across the nation enable us to boast of efficient connectivity to various International ports all across the globe, in all directions.

Efficient operations comprised of organised logistics and timely distribution ensure the required supply at the required destinations.



Strategic **Dealerships** with **Prestigious** organizations

Some of the most prestigious public and private companies constitute our principles & strategic partners.



Trusted by those who Lead

For several renowned clients across the nation,
Sapcon has played an integral role in steel supply.





Sapcon Steels Private Limited

Jammu (Corporate Office)

#6, Akhnoor Road, Jammu - 180016, JK, India
Tel : +91 191-2503705, 2554642

Srinagar (Sales Center)

Sanat Nagar, Rawalpura, Srinagar - 190005, JK, India
Tel : +91 9906099616

New Delhi (Sales & Liaising Center)

B-19, Lower Ground Floor, GK - 1 Enclave,
New Delhi - 110048, DL, India
Tel : +91 11-26242836

Lucknow (Sales & Liaising Center)

214, Levana Cyber Heights, Vibhuti Khand Gomti
Nagar, Lucknow, UP - 226010, India
Tel : +91 9541933851

Ludhiana (Sales Center & Stockyard)

B-24, Phase -II, Metro Road, Focal Point,
Ludhiana - 144004, PB, India
Tel : +91 161-4600831

Chandigarh (Sales Center & Stockyard)

Opp. Railway Goods Shed, Railway Road,
Daria, Chandigarh - 160101, India
Tel : +91 8899009108

Dehradun (Sales Center & Stockyard)

Khasra No 147 and 149, VPO - Harrawala,
Railway Station Road, Dehradun - 248005,
UK, India
Tel : +91 9541905501



hello@sapconsteels.com | www.sapconsteels.com